

Trapeze Bar

HCPCS:

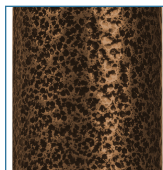


FIGURE A



FIGURE B

- Heavy-gauge two-piece square steel tubing provides maximum support
- Mounts easily to metal frame headboards and fits most major manufacturers'
- Attractive brown-vein finish (Figure A)
- Easy-to-install without tools
- Easy-to-adjust height, length and horizontal position
- Can be shipped UPS

PRODUCTS

Description

PRODUCTS	Description
13009TRAPBV	Trapeze, Bar, Clamp, Brown Vein, 1/cv

SPECIFICATIONS

Description

SPECIFICATIONS	Description
Warranty	Limited Lifetime
Weight Capacity	250 lb