

## Non-Tilt Overbed Tables

HCPCS:

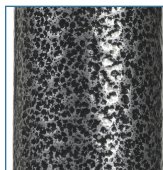


FIGURE A



- Walnut, wood grain low-pressure laminate top
- Table top can be raised or lowered in infinite positions between 28" - 45"
- It can be raised with slightest upward pressure
- Tabletop locks securely when height adjustment handle is released
- For proper assembly, do not remove bottom screw (Figure B)
- "H" base provides security and stability
- 2" swivel casters allow for easy maneuverability
- Silver Vein (Figure A) for (Model #13067) is easy-to-maintain and less institutional looking

### PRODUCTS

### Description

13003	Overbed Table,Dlx.Non-Tilt,1/cs
13067	Overbed Table,SilverVein,Dlx.,1/cs

### SPECIFICATIONS

### Description

Warranty	Limited Lifetime
Weight Capacity	40 lb
Base Dimensions	15.5" (D) x 26.5" (W)
Carton Shipping Weight	24 lb
Weight	21 lb