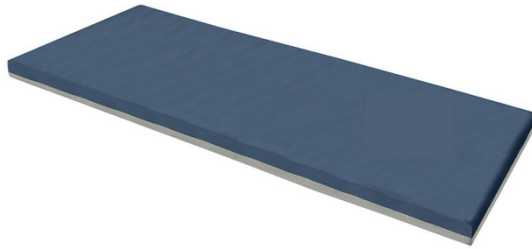


GEL OVERLAY, 78X34X3

HCPCS:



- The Gel Mattress Overlay is designed to successfully prevent, treat, and manage pressure sores.
- The combination of gel bladders encased in a high-density foam casing with a sturdy support base relieves pressure and provides the additional barrier patients need to remain comfortable.
- 24 independent gel tubes prevent migration of gel in high pressure areas
- Raises bed's head and foot without gel migration
- High-density foam perimeter on all sides helps prevent patient roll-out
- Convoluted foam topper provides additional comfort
- Nylon cover is vapor permeable and moisture resistant; low shear and low friction for more comfort; easy to clean
- Requires no assembly
- Weight capacity: 250 lb
- Overall dimensions: 34"W x 78"L x 3"H
- Meets flammability standards TB 117-2013

| PRODUCTS | Description |
|------------|--------------------------|
| GO-78343-C | GEL OVERLAY 78X34X3 1EA/ |