

## Hip-High Chair

HCPCS:

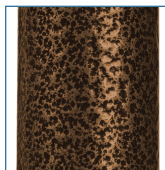


FIGURE A



- Designed for post-hip surgery residents
- Attractive, durable brown-vein finish is easy-to-maintain and less institutional looking (Figure A)
- Contoured armrests are comfortable and durable
- Attractive vinyl seat and backrest are soft, washable, comfortable and water resistant

### PRODUCTS

### Description

17100-BV	Hip Chair, Brown Vein, 1/cs
----------	-----------------------------

### SPECIFICATIONS

### Description

Warranty	1 Year on Upholstery, Limited Lifetime Warranty on Frame
Weight Capacity	300 lbs
Carton Shipping Weight	47 lbs.
Floor to Footrest Height (adjustable)	6"
Weight	37 lbs.
Width Between Arms	17.5"
CA Prop 65	[WARNING: This product can expose you to chemicals that are known to the State of California to cause cancer and birth defects or other reproductive harm. For more information go to <a href="http://www.P65Warnings.ca.gov">www.P65Warnings.ca.gov</a> .]