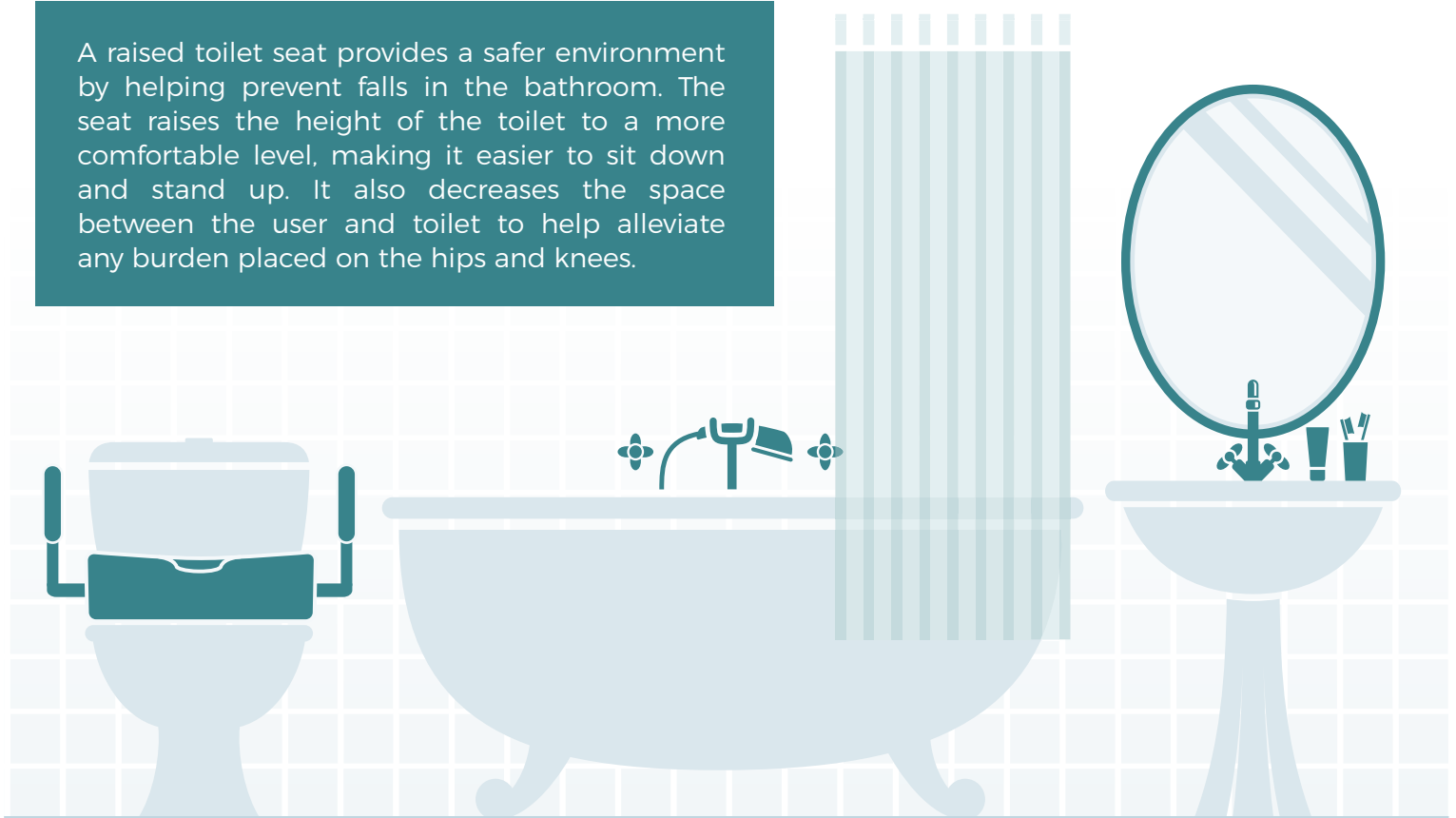


# How to Choose the Right Raised Toilet Seat



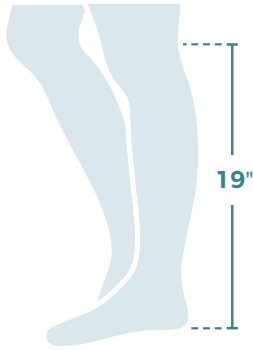
## What is the purpose of a raised toilet seat?

A raised toilet seat provides a safer environment by helping prevent falls in the bathroom. The seat raises the height of the toilet to a more comfortable level, making it easier to sit down and stand up. It also decreases the space between the user and toilet to help alleviate any burden placed on the hips and knees.



# What kind of raised toilet seat do I need?

## Step 1: Determine the height needed



**Measure** the length of your lower back leg  
Add 2"  
 $19" + 2" = 21"$



**Measure** the height of your toilet bowl  
Be sure not to include the seat and lid



**Calculate** the difference  
 $21" - 17" = 4"$   
You need a 4" raised toilet seat!  
Note: If you calculate an odd number, simply round up!

## Step 2: Determine the shape of your toilet

Standard Round



Elongated



### Toilets come in 2 different shapes

- Standard Round
- Elongated

To ensure you are correctly measuring your toilet bowl, measure from the center front to the center of the mounting holes.

## Step 3: Determine which installation type is right for you



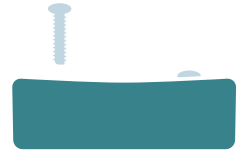
Non-Locking



Locking with  
Knob Mechanism



Locking with  
Tightening Clamps



Bolted Riser  
(Fixed)



### Considerations

If other family members share the bathroom, consider choosing an easily removable option. A riser will allow you to continue using your existing seat and lid.

## Step 4: Determine which features are important to you



Lid vs. No Lid



Hinge vs. No Hinge

Allows for easy cleaning.



Armrests vs. No Armrests

Armrests aid transfer on and off the unit.

Note the distance from your toilet to the wall when considering armrests.



Contoured (Savannah) Style

The front of the unit contours gently downward, making getting on and off of the raised toilet seat easier.

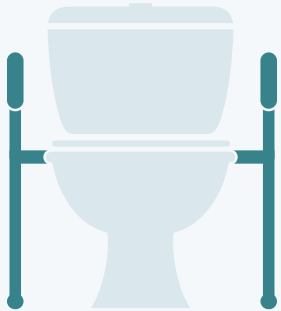
Both the front and back feature openings for ease of accessibility to take care of personal cleansing.

## Safety Considerations



- 1 Be sure to center your weight.
- 2 Routinely check for secure fit before using product.
- 3 Use arm supports only for assistance. Do not use arm supports to support your full body weight.

## Additional Bathroom Safety Items



### Toilet Safety Frames

Pair a toilet safety frame with a raised toilet seat that does not include armrests.

Drive recommends pairing the RTL12000 safety frame with the RTL12064 raised toilet seat.

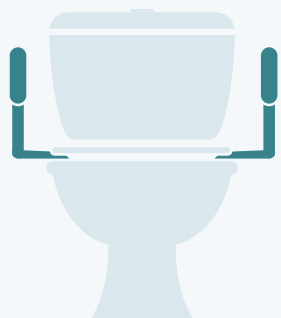


### Grab Bars

Pair a mounted grab bar on the wall alongside a raised toilet seat for extra stability.

Drive Medical offers several mounted grab bar options to coordinate with your bathroom arrangement.

Shop a variety of grab bars at [www.drivemedical.com](http://www.drivemedical.com)



### Toilet Safety Rails

A premium option for those who do not require a raised toilet seat, but are looking for additional stability.

Note: a toilet safety rail cannot be used in conjunction with a raised toilet seat.

The RTL12087 will aid in avoiding a potential tripping hazard when using another mobility device such as a rollator.