

Foot Stool

HCPCS:

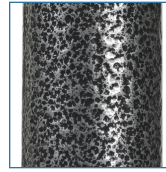


FIGURE A

- Steel-welded silver vein construction (Figure A)
- Non-skid ribbed rubber platform
- Reinforced rubber tips

PRODUCTS

Description

13030-1SV	Foot Stool,Dlx.SilverVein,1/cs
-----------	--------------------------------

SPECIFICATIONS

Description

Warranty	Limited Lifetime
Weight Capacity	300 lb
Carton Shipping Weight	7 lb 14 lb
Step Height	9"
Step Surface	14" (W) x 11" (D)
Weight	5 lb