

## Bariatric Foot Stool

HCPCS:

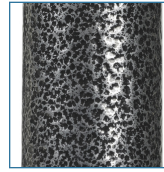


FIGURE A



FIGURE B

- Manufactured with 1" steel tubing
- Silver vein finish easy-to-maintain and less institutional looking (Figure A)
- Non-skid ribbed rubber platform
- 13062-1SV comes with handrail (Figure B)
- Weight Capacity 500 lb

PRODUCTS	Description
13037-1SV	BariatricFootStool,SilverVein, 1/cv
13062-1SV	BariatricFootStool,wHandRail,1/cs

SPECIFICATIONS	Description
Warranty	Limited Lifetime
Handle Height	34"
Weight Capacity	500 lb
Carton Shipping Weight	8   16 lb
Step Height	9"
Step Surface	10" (D) x 14" (W)
Weight	6 10 lb