

Half Length Bed Rails

HCPCS: E0305



FIGURE A

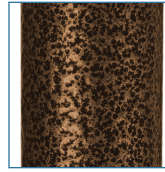


FIGURE B

- Unique design prevents individuals from being lodged between bars
- Ideal for maximum protection when bed is elevated
- Fits most hospital beds with steel frame (Figure A)
- Attractive brown-vein finish is easy-to-maintain and less institutional looking (Figure B)
- Constructed of 1" steel
- Not for use with "Pan-Style" bed surface
- Easy-to-install

PRODUCTS

Description

15201BV	Bed Rail, No-Gap, Half, BV, 1 pair 1/cs
---------	---

SPECIFICATIONS

Description

Warranty	Limited Lifetime
----------	------------------

ACCESSORIES

Description

14198BV	Clamp, 15201BV No Gap Rail, 1/ea, BX
---------	--------------------------------------